

Ningbo Poolstar Pool Products Co., Ltd
www.cnpoolstar.com

OWNER'S MANUAL

MODEL: P1803

Tracy L2

Automatic Pool Cleaner for Above Ground Pools

Cleans the bottom of your pool automatically. Works with all major brands of soft-wall pools. Model P1803 includes 19.7 ft. (6.00 m) of hose to fit pool sizes up to 18 ft. (5.49 m).

This is a unique automatic above ground pool cleaner that is compatible with sand filters as low as 800 gal./h (3,028 L/h) and up to 3,000 gal./h (11,356 L/h), and compatible with filter pumps as low as 1,000 gal./h (3,785 L/h) and up to 2,500 gal./h (9,463 L/h).

The automatic pool cleaner is equipped with an adjustable pressure regulator. The regulator can be used with sand filters between 1,500-3,000 gal./h (5,678-11,356 L/h) and filter pumps between 1,500-2,500 gal./h (5,678-9,463 L/h).

The Automatic Pool Cleaner has a built-in filter that prevents clogging of your hoses and filter system. Before connecting the Automatic Pool Cleaner, inspect the unit to make sure the bottom plate is properly locked in position and that the mesh bag is clean.

WARNING!

THIS IS NOT A TOY!

- Do not let children use or play with the cleaner. Assemble and disassemble this product by adult only.
- Do not allow swimming in the pool while the cleaner is in use.
- TURN OFF THE PUMP before connecting cleaner to the pool.
- If there are stones, roots, or metal corrosion in contact with the bottom side of the liner, clean them out before installing the cleaner. If necessary, have a qualified professional do the cleaning.
- If the liner is brittle, damaged or wrinkled, have a qualified professional perform the necessary repairs or liner replacement before installing the cleaner.
- Make sure the cleaner is not in the pool during any chemical sanitization.
- TURN OFF THE PUMP before servicing the cleaner or performing any maintenance.

NOTE: Drawings for illustration purpose only. May not reflect actual product. Not to scale.

SAVE THESE INSTRUCTIONS

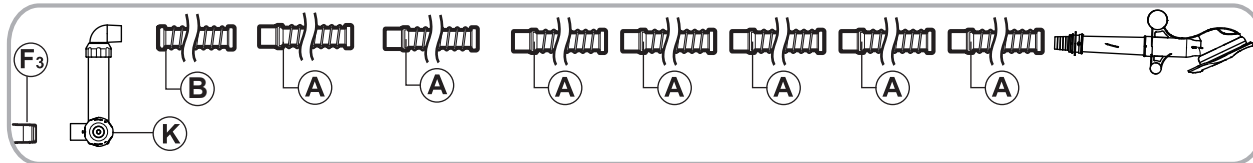
IMPORTANT: Wait 4 hours to use the cleaner after chemical maintenance. The high level of chemicals will damage the diaphragm.

IMPORTANT: After every use, the diaphragm needs to be washed with clean water for 1 minute.

Hose Section Assembly

Sand filter: 800 gal./h (3,028 L/h) to 3,000 gal./h (11,356 L/h). Filter Pumps: 1,000 gal./h (3,785 L/h) to 2,500 gal./h (9,463 L/h).

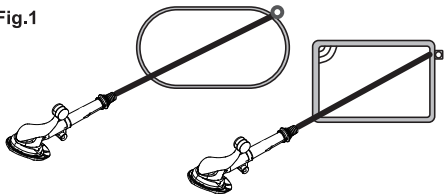
Connect F₃-K-B-A in order, then connect the long hose sections(A+A+A...)



For 18 ft. (5.49 m) round & rectangular pools, connect all 8 long hoses (A+B).

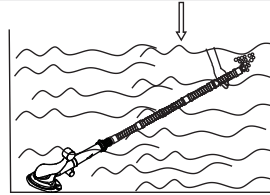
For pools smaller than 18 ft. (5.49 m), reduce the number of long hoses (A) simultaneously until total length of hose assembly is equivalent to the length from skimmer/dedicated suction line to the fastest point in the pool plus a length equal to hoses A. (Fig. 1)

Fig.1



Completely immerse the hoses and the Automatic Pool Cleaner to let air escape, then connect the open end of the hose to the Automatic Pool Cleaner (Fig. 2).

Fig.2



IMPORTANT: Before connecting the hoses to the pool, all air inside the hose must be removed following the below procedures.

You can connect all of the hoses together and place either opening towards the pool water inlet hole to let the water flow push out the entrapped air.

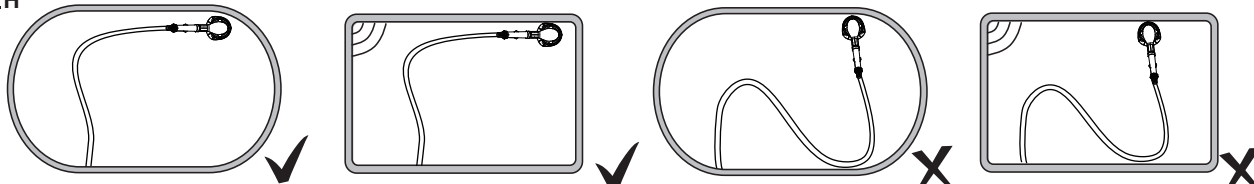
IMPORTANT: Trapped air in your cleaning system may prevent the pump from operating correctly. If this happens, switch off your pump, open the release valve (if applicable) on your filter and keep it open until only water comes out from the release valve. Then close the valve. Refer to your filtration manual for how to release the air.

HOW TO CONNECT YOUR Automatic Pool Cleaner

Note: Turn filtration OFF before connecting the Automatic Pool Cleaner to your pool.

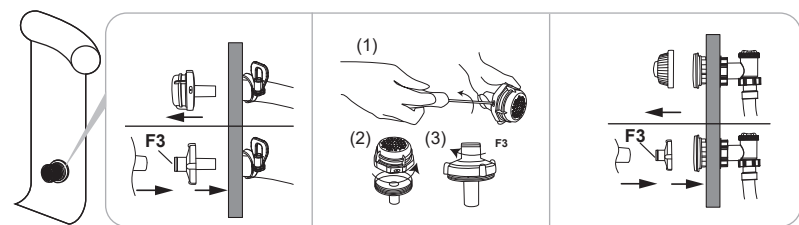
Do not twist the hoses when connection, make it be linear floating onto the water as Fig.H

Fig.H

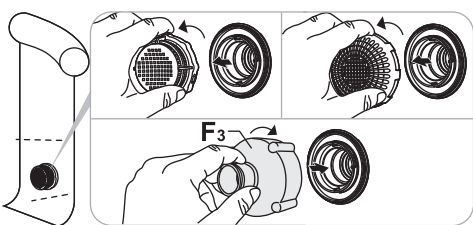


The **2** connectors (**F1/F3**) and Connection Hose A enables the **Automatic Pool Cleaner** to fit most brands of Above Ground Pools in the market. Choose the right connector and see the following diagrams for proper connection to the water outlet of your pool.

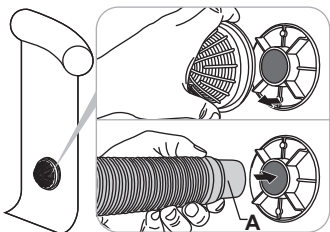
1.25 in. (32 mm) Strainer
Detach the strainer plug and insert the **F3** into the strainer hole.



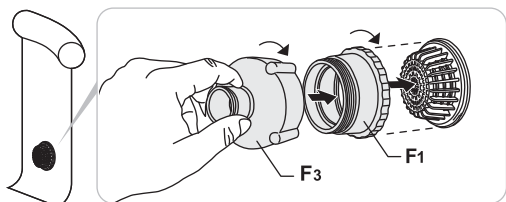
1.5 in. (38 mm) Strainer
Unscrew the strainer grid cover and screw on **F3** Strainer.



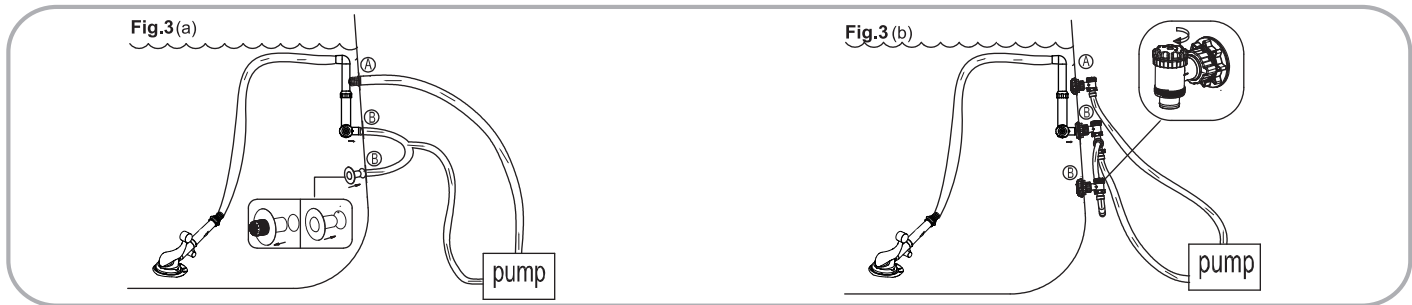
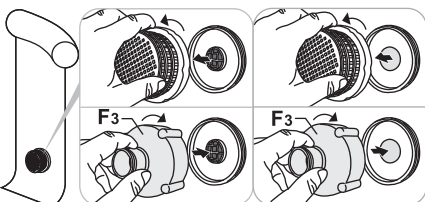
1.4 in. (36 mm) Strainer Hole
Remove the grid cover and directly insert the cuff of hose **A** into the strainer hole.



3.6 in. (92 mm) Strainer (with side thread)
Screw **F3** onto **F1**, and then align and screw **F1** onto the strainer.



3 in. (80 mm) Strainer
Unscrew the strainer grid cover and screw **F3** into the middle thread of the strainer.

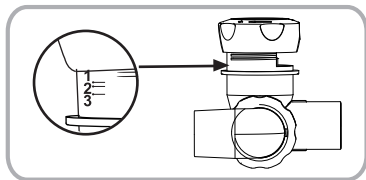


NOTE: If your pool has two suction lines, then one suction line should be covered before using the cleaner. (**Fig. 3**)

Pressure Regulator Adjustment

Unscrew the valve, lock nut, and adjust the Z-type valve up and down to ensure that the water hose is on the horizontal surface (as shown on the right), and tighten the lock nut of the valve.

WARNING! TURN OFF THE PUMP BEFORE ADJUSTING THE PRESSURE REGULATOR.

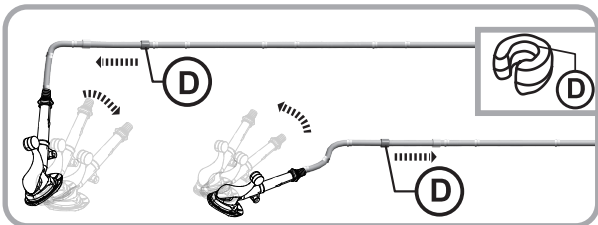


- 1) When used with pumps with the flow rate: 3,000 gal./h (11,356 L/h), turn the top knob until the bottom reaches Line 1.
- 2) When used with pumps with the flow rate: 2,200-2,500 gal./h (8,327-9,463 L/h), turn the top knob until the bottom reaches Line 2.
- 3) When used with sand filters with the flow rate: 1,500 gal./h (5,678 L/h) or filter pumps with the flow rate: 2,000 gal./h (7,571 L/h), turn the top knob until the bottom reaches Line 3.
- 4) Sandfilter 800gal./h(3.028L/h), Filter Pumps:1,000gal gal./h(3.785L/h) to 1.500gal./h(5.698L/h), Screw the regulator firmly

NOTE: Different brands of pumps of the same horsepower may vary in performance. You may need to adjust the regulator to the next highest setting if the cleaner sticks to the pool floor and does not move due to strong suction.

Hose Weight Application

Ideally, the bottom surface of the cleaner should rest flat on the pool bottom. First, assemble the hose weight on the first long white hose (**A**) from the cleaner. If the cleaner leans forward, move the hose weight along the long white hose towards the cleaner. If the cleaner leans backward, move the hose weight to the next long white hose.



HOW TO OPERATE YOUR AUTOMATIC POOL CLEANER

CAUTION! REMOVE THE LADDER FROM THE POOL BEFORE STARTING.

Once your **Automatic Pool Cleaner** is connected to the pool, turn on your pump. The **Automatic Pool Cleaner** starts to clean the bottom of your pool. It will operate automatically until the filter basket is full. The filter basket has a removable mess bag designed to filter the sand and small particles from the bottom of the pool.

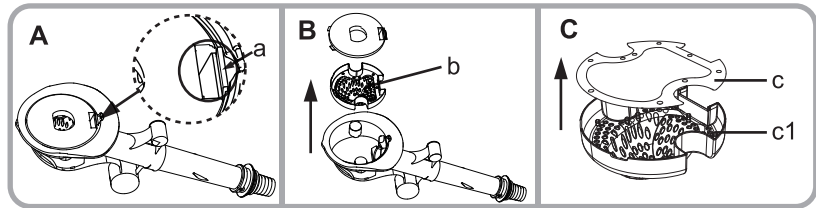
IMPORTANT! Make sure the mesh bag is in place during cleaner operation.

Empty this mesh bag regularly to ensure maximum suction. If your pool has many leaves or large debris on the bottom, they must be removed using a leaf skimmer (not included). This will prevent the basket from becoming full too quickly and allow the smaller particles to be collected.

HOW TO CLEAN

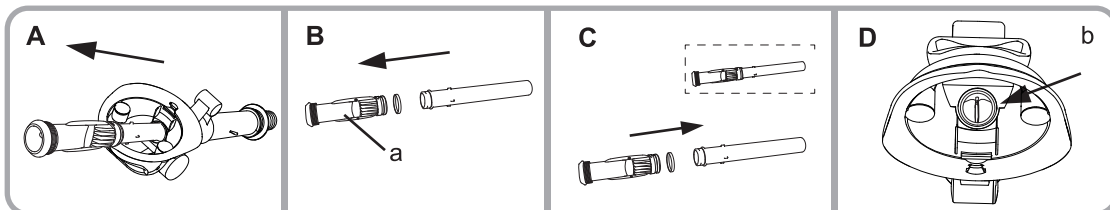
- (1) See "a" from the picture A. Press in the center to open the bottom cover.
- (2) See "b" from the picture B. Take out the filter plant.
- (3) See "c" from the picture C. Separate the filter net "c" and the filter frame "c1", then clean the filter plant.

Attention: The velcro can stick to the back net and filter net inside. Please separate them properly to avoid any damage on the filter net.



HOW TO REPLACE THE DIAPHRAGM

- (1) Open the bottom cover and take out the filter net.
- (2) See from the picture A. Pull out the diaphragm assembly part from the product.
- (3) See from the picture B. Separate the diaphragm "a" from the connection tube, and take out the diaphragm O ring.
- (4) Put on the new diaphragm with the ring, and connect them back to the tube according to the picture C.
- (5) Insert the diaphragm assembly part in the original position, see the "b" from the picture D. Twist the diaphragm until it is in the vertical position.
- (6) Put on the filter and cover with the lid.



TROUBLE SHOOTING

Warning! Turn off the pump before performing cleaning, maintenance and troubleshooting.

The cleaner stops operating for the following reason:

Problem	Solution
- Air inside the pump	Stop the filter pump or sand filter, purge the air and start again
- The hose is too long	Reduce the length of the hoses
- The hoses are entangled	- According to Fig.H , re-arranging and connecting the hoses A - Slow down the flow of valve.
- The debris screen inside the cleaner head is full of debris	Stop the pump, take out the cleaner from the water and remove the debris
- The filter cartridge or sand is too dirty	Filter pump - Stop the pump, block the connector A and B to avoid water flowing out from the pool, and clean the filter cartridge or replace if necessary Sand filter pump - Disconnect the cleaner from the pool, perform backwash and rinse to clean the sand
- The diaphragm is broken	Check if the diaphragm has any holes or breakage. If so, follow the instructions on how to replace the diaphragm
- The cleaner is stuck on wrinkles	Check the bottom of the pool. If there are wrinkles, level the pool to reduce them. Check to see if the debris screen inside of the head is dirty. Clean the debris screen. Check to see if the filter cartridge or filter sand is dirty. Clean the filter cartridge or back wash the filter sand. Move the hose weight D to the next piece hose A, see Hose weight application